

Parkheath

Sold on Service

Fleet Road NW3
£350,000



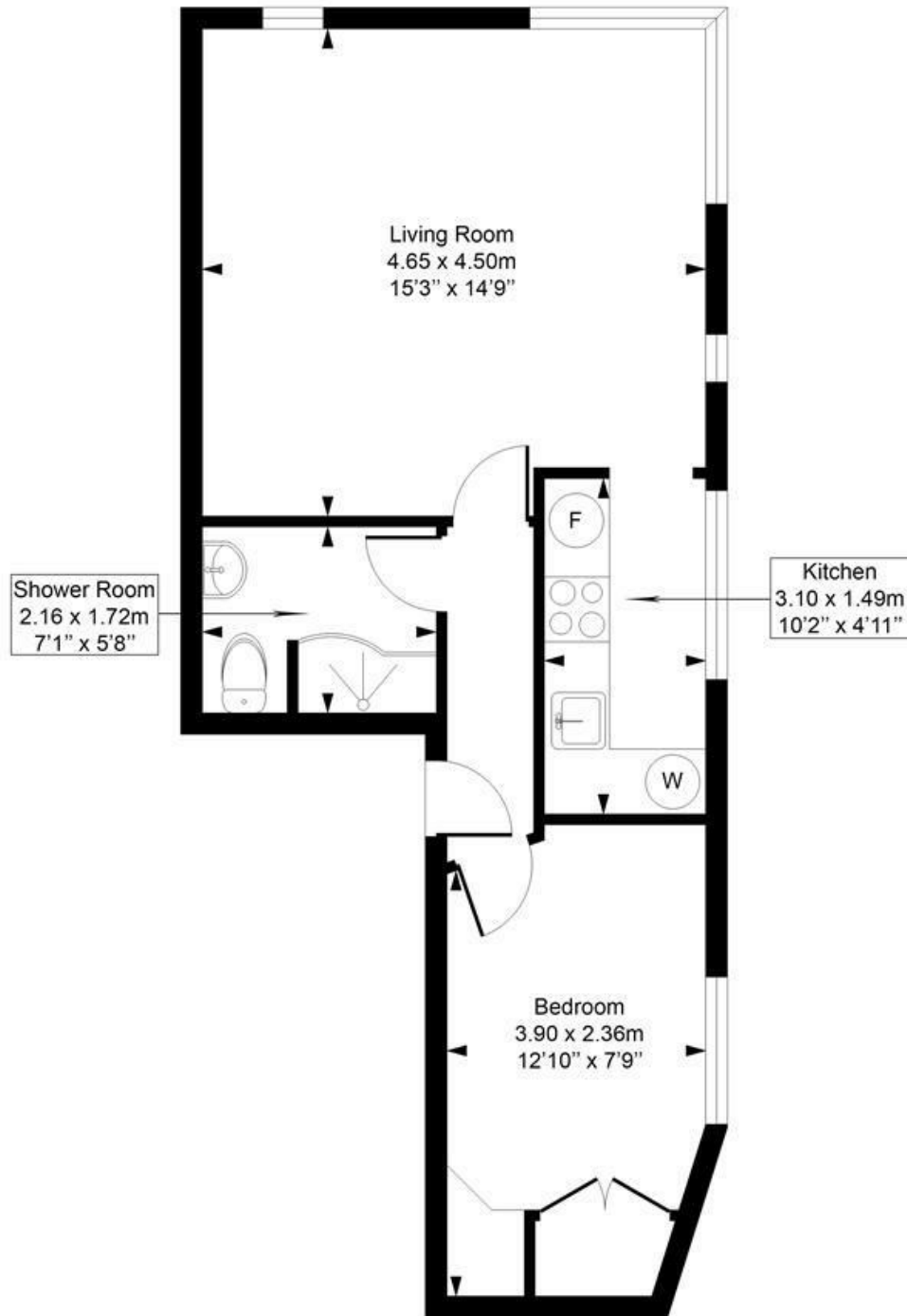
Extremely bright 1 bedroom flat
450 sq ft approx on the first floor
Fully tiled shower room
Double glazed
125 years from 1994

Floor to ceiling windows
12' bedroom with built in wardrobes
Good decorative order
Double aspect 15' reception
Close to Hampstead Heath

Belsize Park Office 020 7431 3104

Fleet Road

Approximate Gross Internal Area = 41.9 Sq m / 451 sq ft



First Floor

Measured in accordance with RICS guidelines. Every attempt is made to ensure accuracy

However all measurements are approximate.

The floor plan is illustrative purposes only and is not to scale

ELLIE CLAIRE PHOTOGRAPHY LTD

www.ellieclairephotography.com

The particulars do not constitute part of an offer or contract. The particulars, including text, photographs and plans, are for the guidance only of prospective purchasers/tenants and must not be relied upon as statements of fact. The descriptions provided therein represent the opinion of the author and whilst given in good faith should not be construed as statements of fact. Nothing in these particulars shall be deemed a statement that the property is in good condition or otherwise or that any services or facilities are in good working order. All measurements are approximate